

# The Depot

The Maine Central Railroad, a standard gauge railway, entered West Farmington on June 20, 1859, eventually crossing into Farmington in 1869 on a trestle built on the site of the first bridge. This opened new markets for the area's agricultural products.

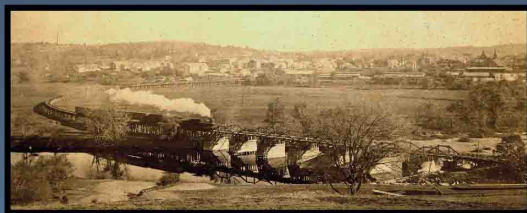
In 1879 the Sandy River and Rangeley Lakes Railroad, a narrow gauge line, was established and connected northern Franklin County communities with the Maine Central Railroad. The economical two-foot gauge was chosen, as it required minimum grading, smaller ties and rails, and a smaller locomotive. It transported tourists north and hauled timber to southern markets.



*Courtesy of Tom Sawyer's Collection*



*Courtesy of Farmington Public Library*



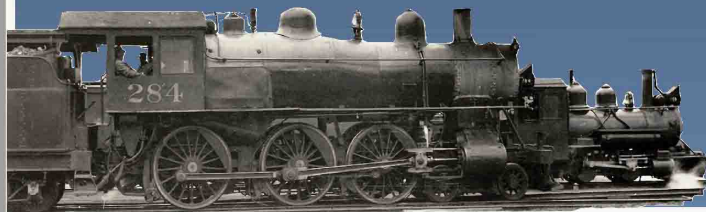
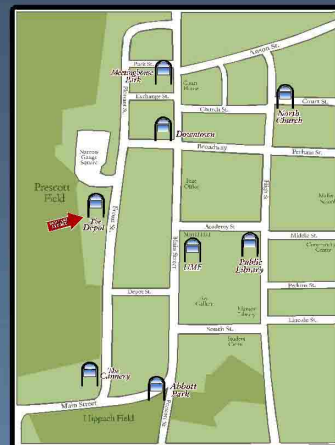
*Courtesy of Farmington Historical Society*

In 1808 the first bridge across the Sandy River was completed for \$1,000. The road from the bridge continued up Broadway and Perham Street. After the floods that caused damage to the bridge in 1814, the road was discontinued and a new bridge was erected near the current Center Bridge site.

*Courtesy of Henri Vallancourt*



*Prior to railroad transportation, the Wabanaki people, Maine's earliest inhabitants, used river highways to move between seasonal homes and hunting grounds. The Sandy River provided a critical link between the Kennebec and Androscoggin watersheds. Early settlers then followed the Indian trails (water and land).*



*Courtesy of Tom Sawyer's Collection*