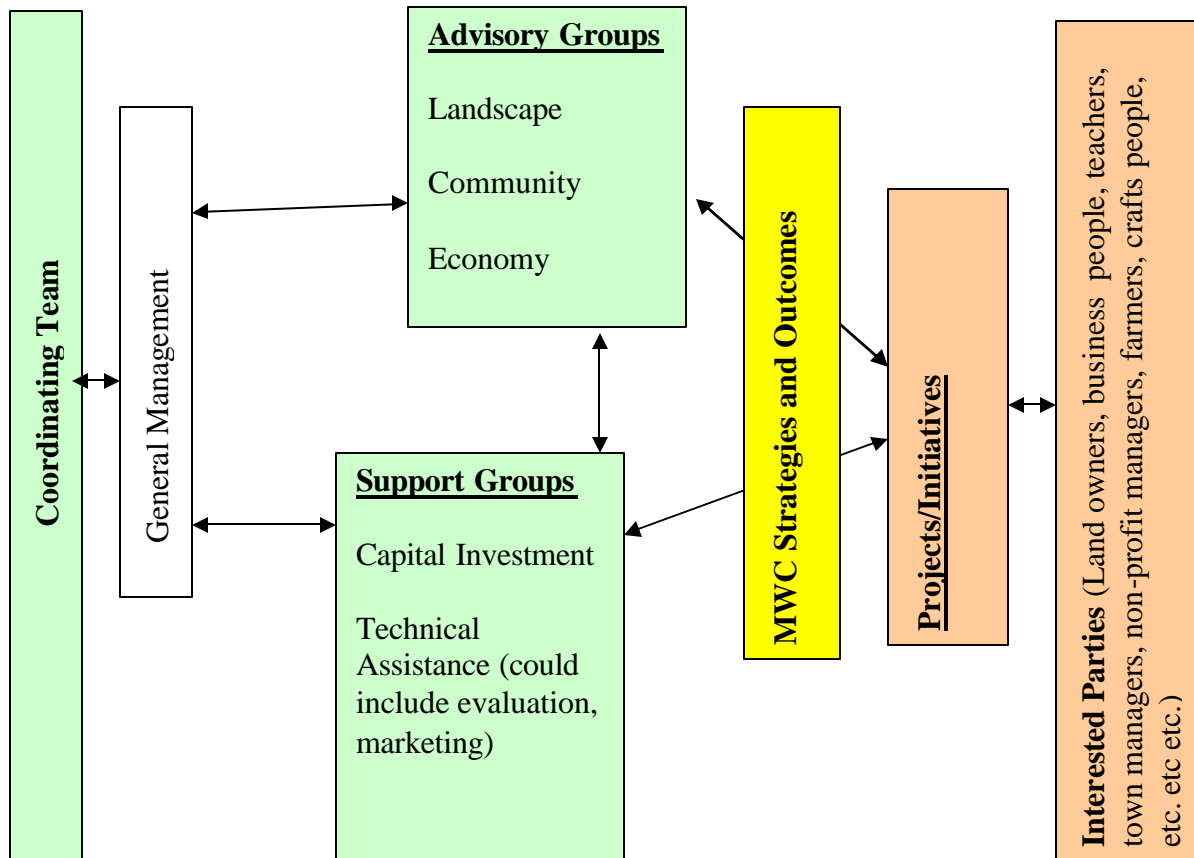


Maine Woods Consortium
Organizational Chart, Apr 09



Notes:

Interested Parties generate projects/initiatives.

Advisory Groups – establish MWC outcomes/strategies, identify those initiatives that appear to be using MWC indicated strategies to move toward MWC desired outcomes, direct capital investment and technical assistance to high priority projects. (These groups may also generate projects/activities if gaps are discovered.)

Support Groups – these groups will provide services to initiatives identified as high priority by advisory groups.

General Management includes financial management, internal communications, information management, evaluation.